

A Symposium on
*New Frontiers
in Arts Research*



Center for Cultural Affairs
O'Neill School of Public and Environmental Affairs

May 8-9, 2019



Front cover image and art throughout created by hellocatfood (©Antonio Roberts) via Creative Commons.
Roberts created this piece during a 2014-2015 artist residency at the University of Birmingham,
where he focused on issues surrounding copyright, permission, culture, and art.





WELCOME

Dear symposium attendees –

We would like to welcome you to the symposium on New Frontiers in Arts Research. The symposium marks the official opening of the Center for Cultural Affairs (CCA) at the O'Neill School of Public and Environmental Affairs.

The mission of the CCA is to advance the understanding of the role of arts and culture in public life. We achieve this mission through programs that generate research, train the next generation of scholars in the field, and influence practice in the arts and cultural sector. We are fortunate to be part of the O'Neill School, which is home to over 100 full-time faculty from a variety of disciplines. The CCA is also affiliated with several degree programs, including the top-ranked masters of public affairs program in the nation, a Ph.D. program in public affairs, and highly regarded graduate and undergraduate programs in arts administration.

Over the next two days, we aim to stimulate a dynamic conversation about the need for high quality arts research among funders, practitioners, and scholars. We invite you to actively participate in this conversation, which will help inform the direction the CCA will take in defining and advancing the field of cultural affairs.

We look forward to a productive and enjoyable symposium.

Sincerely,

Joanna Woronkiewicz, Ph.D., Director of Institutional Advancement

Michael Rushton, Ph.D., Director of Curricular Programs

Douglas Noonan, Ph.D., Director of Research Initiatives



PROGRAM SCHEDULE

Events will take place at the O'Neill Graduate Center unless otherwise specified

May 8

4:00 - 6:00 pm

Campus Arts Tour

Meet at the 7th Street entrance of the Indiana Memorial Union

6:00 - 8:00 pm

Opening Reception

Featuring music by the Monika Herzig Trio

9:30 - 11:00 pm

Dessert Reception

Featuring an organ performance by Patrick Kabanda
Alumni Hall at the Indiana Memorial Union

May 9

8:00 - 9:00 am

Continental Breakfast

9:00 - 9:30 am

Demonstration and Activity on "Creative Leadership"

Led by John Michael Schert, Coach, Speaker, Artist, and Entrepreneur

9:30 - 10:15 am

Keynote Presentation

- Will Miller (Introduction), President, Wallace Foundation
- Patrick Kabanda, Author, *The Creative Wealth of Nations*

10:15 - 11:00 am

Keynote Panel with Q&A

- Bill Ivey (Moderator), Author; Former Chairman, National Endowment for the Arts
- Claudia Avellaneda, Associate Professor, O'Neill School

11:00 am - 12:00 pm

Plenary Panel

- Sunil Iyengar (Moderator), Research & Analysis Director, National Endowment for the Arts
- Susan Feder, Program Officer, The Andrew W. Mellon Foundation
- Cate A. Fox, Senior Program Officer, MacArthur Foundation

12:00 - 1:00 pm

Lunch

1:00 - 2:30 pm

Panel – "The Role of Arts Research in Regional Planning"

- Michael Rushton (Moderator), Professor, O'Neill School and Director of Curricular Programs, Center for Cultural Affairs
- Jen Cole, Chief of Staff, Herberger Institute for Design and the Arts
- James Doeser, Freelance Researcher, Writer, Consultant
- Adrian Ellis, Founder, AEA Consulting, Global Cultural Districts Network
- Candace Miller, Ph.D. Candidate in Sociology, University of Virginia



2:30 -4:00 pm

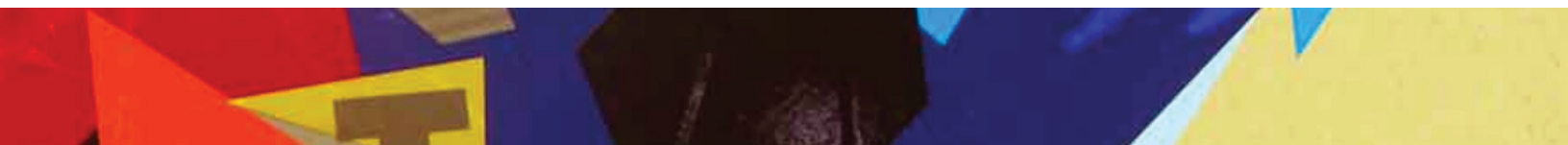
Panel – “Demonstrating the Impact of Arts on Society”

- Douglas Noonan (Moderator), Professor, O'Neill School and Director of Research Initiatives, Center for Cultural Affairs
- Bronwyn Mauldin, Director of Research and Evaluation, Los Angeles County Arts Commission
- Will Miller, President, Wallace Foundation
- Michael Orlove, Director of State, Regional, and Local Partnerships, and International Activities, National Endowment for the Arts
- Diane Ragsdale, Assistant Professor, The New School

4:00 - 5:00 pm

Closing Remarks

- Andrew Recinos (Introduction), President, Tessitura Network
- Joanna Woronkiewicz, Assistant Professor, O'Neill School and Director of Institutional Advancement, Center for Cultural Affairs
- Michael Rushton
- Douglas Noonan



SPEAKERS

Keynote Speaker



PATRICK KABANDA, author of *The Creative Wealth of Nations* (Cambridge University Press 2018)

A Juilliard-trained organist and Fletcher-trained international affairs professional, Kabanda received Juilliard's William Schuman Prize for outstanding achievement and leadership in music in 2003 and from 2012 to 2013 was a Charles Francis Adams Scholar at the Fletcher School. Besides concertizing and lecturing worldwide, he has taught at Phillips Academy, consulted for the World Bank's Office of the Senior Vice President and Chief Economist, and contributed to the World Development Report 2016 and UNDP's Human Development Report 2015. He was awarded the 2013 Presidential Award for Citizenship and Public Service from Tufts University, Massachusetts (www.musikaba.net).

Plenary Speakers



SUSAN FEDER, Program Officer, The Andrew W. Mellon Foundation

Susan Feder joined the Foundation in 2007 as program officer for performing arts and now serves in that capacity in the consolidated program for Arts and Cultural Heritage. Feder oversees grantmaking for performing arts and related organizations, helps develop new initiatives, and works closely with other programs on grants of overlapping areas of interest. Before joining the Foundation, as vice president of the music publishing firm G. Schirmer, Inc., she spent 20 years developing the careers of many leading composers in the United States, Europe, and the former Soviet Union.



CATE FOX, Senior Program Officer, MacArthur Foundation

Cate A. Fox is a senior program officer at the John D. and Catherine T. MacArthur Foundation headquartered in Chicago. At the Foundation, Cate oversees Arts and Culture in Chicago and Community Capital awards as part of her work with the Chicago Commitment team and the MacArthur Award for Creative & Effective Institutions.

Previously, Cate served as a senior consultant at The Alford Group, a consulting firm to the nonprofit community. Over seven years with Alford, she helped nonprofit organizations – including those in the arts, evaluate programs, assess organizational strength, conduct strategic planning, and increase fundraising. She also has worked with the Girl Scouts of the USA to revise their international programs and structure. Cate received a master of arts degree in peace and development with first class honors from the University of Limerick (Limerick, Ireland), and a bachelor of arts cum laude from Hollins University (Roanoke, Va.).

Speakers and Panelists



CLAUDIA AVELLANEDA, Associate Professor, O'Neill School

Claudia N. Avellaneda specializes in governance and public management in developing countries, with an emphasis on local governments. She joined the IU O'Neill School of Public and Environmental Affairs in 2013, after serving as assistant professor in the Department of Political Science and graduate coordinator of Latin American Studies at the University of North Carolina-Charlotte.

Her main research interests are decentralization, public policy, innovation, governance, and public management, with a regional focus on Latin America. Specifically, Avellaneda investigates determinants of government performance in Latin American municipalities by focusing on the role of the local chief executive — the mayor.

Avellaneda serves as the international editor for the *Journal of Behavioral Public Administration* and is an elected member of the 2017-21 Public Management Research Association Governing Board. She was selected as the 2019-20 president of the Midwest Public Administration Caucus.



JEN COLE, Herberger Institute for Design and the Arts

Jennifer "Jen" Gilligan Cole is the chief of staff of the Herberger Institute for Design and the Arts at Arizona State University (ASU) and the director of its National Accelerator for Cultural Innovation and Inclusion. In her roles at ASU, she coordinates innovation work across the Herberger schools and art museum and seeks to identify, invest in, prototype, and scale practices and policies that center artists and designers as co-creators of social change in justice, health, and sustainability. She previously served nine years as executive director of the Metro Arts: Nashville's Office of Arts + Culture, where she led the city's efforts in art, culture, and creative economy. She has over 20 years of experience in organizational leadership and change management.



JAMES DOESER, Freelance Researcher, Writer, Consultant

James Doeser is a freelance researcher, writer, and consultant based in London. Until 2013 Doeser was a senior researcher at the Arts Council, where he led a variety of research projects to inform policy and strategy across the cultural sector. Nowadays Doeser works with all manner of cultural organizations, artists, and agencies to help them find and deploy high-quality research.

Doeser has a background in archaeology and his Ph.D. examined the evolution of archaeology public policy in England. Before joining the Arts Council, Doeser worked at the Council for British Archaeology where he worked on a range of public engagement activities and was an editorial assistant for *British Archaeology* magazine. Doeser also spent a short time at the BBC developing archaeology TV programs. Doeser is currently on the advisory board of the journal *Cultural Trends*, is an honorary research associate at the UCL Institute of Archaeology, and is a research associate at King's College London.



ADRIAN ELLIS, Founder, AEA Consulting, Global Cultural Districts Network

Adrian Ellis is the director of AEA Consulting (aeaconsulting.com, 1990) and the Global Cultural Districts Network (gcdn.net, 2013). AEA's clients include many leading museums, and he writes regularly on strategic and operational issues in the cultural sector for the *Art Newspaper* among other publications. He is a board member of New York's Poets House, and a past board member of the Getty Leadership Institute and the National Museums and Galleries of Wales. Ellis served as Executive Director of Jazz at Lincoln Center from 2007 – 2011. He was educated at Oxford University and the London School of Economics.



BILL IVEY, Author; Former Chairman, National Endowment for the Arts

Bill Ivey is a writer, teacher, and experienced nonprofit executive. He is senior arts policy fellow with Americans for the Arts and currently serves as visiting research associate in the Department of Folklore and Ethnomusicology at Indiana University. Ivey was founding director of the Curb Center for Art, Enterprise, and Public Policy at Vanderbilt University and from 2012 through 2014 was senior consultant to the university's Office of International Relations.

From 1998 through 2001, Ivey served in the Clinton-Gore administration as Senate-confirmed chairman of the National Endowment for the Arts. Ivey is a trustee of the Center for American Progress and was a team leader in the Barack Obama presidential transition. He is the author of two books on culture and politics, *Arts, Inc: How Greed and Neglect Have Destroyed Our Cultural Rights* (California, 2008) and *Handmaking America: A Back-to-Basics Pathway to a Revitalized American Democracy* (Counterpoint, 2012).



SUNIL IYENGAR, Research & Analysis Director, National Endowment for the Arts

Sunil Iyengar directs the Office of Research & Analysis at the National Endowment for the Arts. Under his leadership, the office has produced dozens of research reports, hosted periodic research events and webinars, led strategic plan development for the agency, and established research and data partnerships with the U.S. Census Bureau and the Bureau of Economic Analysis. His office also conducts program evaluations and performance measurement for the NEA. Working with his team, Iyengar has created and pursued a long-term research agenda (based partly on an arts "system map" his office helped to design), founded a national data repository for the arts, and launched two awards programs for arts researchers. He chairs a federal Interagency Task Force on the Arts and Human Development. As of August 2018, the NEA's most recent research publications include *Rural Arts, Design, and Innovation in America* and *Staying Engaged: Health Patterns of Older Americans Who Participate in the Arts*.



BRONWYN MAULDIN, Director of Research and Evaluation, Los Angeles County Arts Commission

Bronwyn Mauldin is director of research and evaluation at the Los Angeles County Arts Commission where she oversees a team utilizing data and social science research methods to improve access to the arts and strengthen the arts ecology. She was a key instigator behind LA's annual Arts Datathon. Mauldin has spent her career conducting applied research and evaluation for nonprofits, philanthropies, and government. She teaches research methods to arts management students at Sotheby's Institute of Art at Claremont Graduate University. Prior to the Arts Commission, Mauldin evaluated farmworker programs in California's Central Valley,



studied employment conditions for truck drivers in the Pacific Northwest, analyzed apprenticeship opportunities in the healthcare industry, was a nonpartisan policy analyst in the Washington State House of Representatives, and researched villager organizing in rural northeast Thailand. Mauldin has a master's in public administration from the University of Washington. She is also a zine maker and novelist.



CANDACE MILLER, Ph.D. Candidate in Sociology, University of Virginia

Candace Miller is a Ph.D. candidate in sociology at the University of Virginia. Her research focuses on the intersection of racial inequalities, urban transformation, and culture. Her current research explores the cultural and material impacts of contemporary urban redevelopment strategies on black-owned businesses compared to white-owned businesses. In other projects, she has examined the distribution of arts organizations among poor and minority neighborhoods in U.S. metropolitan areas and how art and architecture influence students' sense of access to space on a public university campus. She has also written about the production of culture, inequality based on material consumption, and cultural diffusion. Her research has been funded by the National Science Foundation, the Ford Foundation, and the Washington Center for Equitable Growth.



WILL MILLER, President, Wallace Foundation

Since 2011, Will Miller has been the president of The Wallace Foundation, an independent national foundation located in New York City. The foundation's mission is to foster improvements in learning and enrichment for disadvantaged children and the vitality of the arts for everyone.

Miller is the former chairman of Irwin Management Co. and former chairman and CEO of Irwin Financial Corporation, both of Columbus, Indiana. He has served on the boards of the MacArthur Foundation, Yale University, and Public Radio International, as well as the Community Education Coalition of Columbus, the Central Indiana Corporate Partnership and Vision 20-20, a major downtown revitalization initiative in Columbus. He currently serves on the board of directors of Cummins, Inc., and three mutual funds managed by Capital Research & Management. He was elected a fellow of the American Academy of Arts and Sciences in 2008.



MICHAEL ORLOVE, Director of State, Regional, and Local Partnerships, and International Activities, National Endowment for the Arts

Michael Orlove has been with the National Endowment for the Arts since 2012, where he has served as the director of Artist Communities and Presenting & Multidisciplinary Works and has responsibility over the agency's international programs. In April 2019, Orlove was named the director of regional, state and local partnerships, a newly created position. Previously, Orlove spent 19 years as senior program director for the Chicago Department of Cultural Affairs. His tenure with the department led to nearly two decades of innovation, creativity, and passion for public service with the City of Chicago. Orlove helped transform the Chicago Cultural Center into a prime downtown performing arts venue and launched two staples of the summer festival season – Chicago SummerDance and World Music Festival: Chicago. Orlove also served as the director of music programming in Millennium Park since its grand opening in 2004. Honors include being named one of the "Chicagoans of the Year" in music by the *Chicago Tribune* in both 1999 and 2009, as well as one of Chicago's "Global Visionaries" by Chicago Public Radio WBEZ and the *Chicago Matters: Beyond Burnham* series. He has a BA in history from the University of Wisconsin-Madison and an MA in performing arts management from Columbia College Chicago.





DIANE RAGSDALE, Assistant Professor, The New School

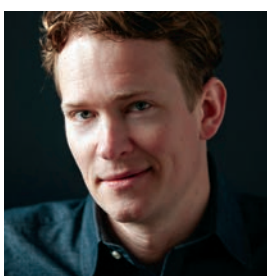
Diane Ragsdale joined the New School in 2017 as assistant professor and program director for a new MA in Arts Management and Entrepreneurship for artists. She is currently a doctoral candidate at Erasmus University Rotterdam, where she lectured from 2011–2015 in the cultural economics and sociology of the arts programs. Her dissertation concerns the relationship between U.S. commercial and nonprofit theater. She is the author of the arts and culture blog, *Jumper*, published on artsjournal.com; co-leads the Cultural Leadership Program at Banff Centre for Arts and Creativity in Canada; and teaches on an adjunct basis at Yale University. Before 2010 she was a program officer for theater and dance at the Andrew W. Mellon Foundation in NYC and managing director at On the Boards in Seattle, among other roles. She has been the keynote speaker at dozens of arts conferences in North America, Europe, the United Kingdom, and Australasia.



ANDREW RECINOS, President, Tessitura Network

Andrew Recinos is president of the Tessitura Network. He is responsible for oversight of Tessitura's North American operations, including consulting, application support, managed services, community, conference, and learning resources divisions. Working closely with CEO Jack Rubin, Recinos is a key strategic leader for the company. Taking an active role in connecting with Tessitura's member organizations, Recinos visits with scores of cultural professionals around the globe each year, sharing news about the company and learning the many unique stories of our community. Recinos's presentations draw insights from the multifaceted organizations in the world of Tessitura.

Recinos has a Master's Degree in Arts Administration and a Bachelor of Music, Composition from Indiana University. He currently serves on the Distinguished Alumni Council of the Indiana University O'Neill School of Public and Environmental Affairs. He lives in Portland, Oregon, with his wife and daughter.



JOHN MICHAEL SCHERT, Coach, Speaker, Artist, and Entrepreneur

John Michael Schert began his career as a dancer with American Ballet Theatre and Alonzo King LINES Ballet. In 2004, Schert cofounded the Trey McIntyre Project (TMP), serving as the company's executive director and a dancer for nine years. During that time he gained a unique insight into the process and product of art, which has led him to become a sought-after national arts leader and speaker focusing on the evolving role of artists in American society. As executive director of TMP, Schert oversaw the company's mission and ensured McIntyre's artistic voice was recognized, funded, and marketed across the globe. During his tenure, TMP was profiled in *The New York Times* and by the PBS NewsHour, and was named one of "5 Nonprofit Innovators to Watch in 2013" by the *Chronicle of Philanthropy*.



– NOTES –



This symposium is supported by Indiana University's New Frontiers in the Arts & Humanities Program
and the O'Neill School of Public and Environmental Affairs.



O'NEILL
SCHOOL OF PUBLIC AND
ENVIRONMENTAL AFFAIRS